

## NEWS RELEASE

### **RIO TINTO INTERSECTS 14 METRES OF 0.89% COPPER AND 8 G/T SILVER INCLUDING 6 METRES OF 1.67% COPPER AND 13 G/T SILVER AT FORUM'S JANICE LAKE COPPER/SILVER PROJECT, SASKATCHEWAN**

**Vancouver, B.C., June 9, 2021** - Forum Energy Metals Corp. (TSX.V: FMC; OTCQB: FDCFF) ("Forum" or "Company") is pleased to announce the second round of drill results from Rio Tinto Exploration Canada's (RTEC) Rafuse drill target on Forum's 100% owned Janice Lake copper/silver project in Saskatchewan. RTEC has mobilized crews to open the onsite Burbidge Lake camp and plans to be drilling before the end of June. A detailed plan for follow-up drilling and plans for regional exploration of the 52 kilometre extent of the Janice Lake property will be reported when finalized.

**Ken Wheatley, VP, Exploration** noted, "Hole 28 intersected 14 metres of high-grade oxide copper that is interpreted as structurally controlled mineralization on the last section drilled to the northeast. This adds another dimension to the potential at Janice. The Rafuse target continues for approximately 800 metres to the northeast and further drilling will be focused on this trend."

Assays from the final five holes of the winter drill program have extended copper mineralization for 670 metres of strike on the Rafuse target:

- JANL0026 – 0.25% copper and 2.05 g/t silver over 12.3 metres from 39.7m to 52m.
- JANL0027 – No significant intercept.
- JANL0028 – **0.89% copper and 8.02 g/t silver over 14 metres from 246m to 260m, including 6m of 1.67% copper and 13.6 g/t silver from 254.1 to 260.1m**
- JANL0029 – 0.23% copper and 2.52 g/t silver over 6 metres from 3m to 9m.
- JANL0030 – 0.27% copper and 3.08 g/t silver over 39 meters from 172m to 211m.

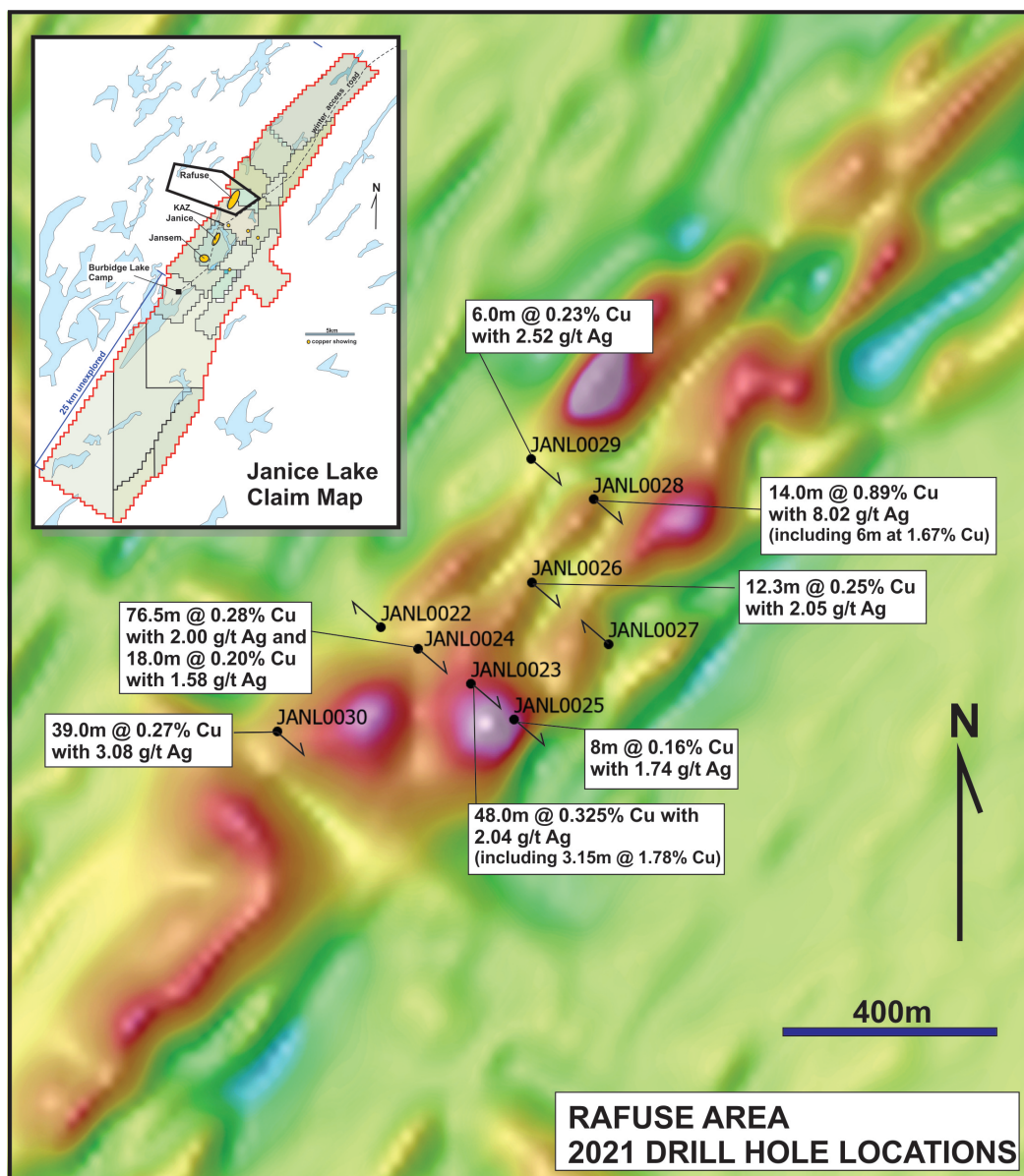
Drill hole JANL0026 was a down-dip follow-up to historic drill hole RA4-69 that intersected 0.68% copper over 17.1 metres at the top of the hole and was stopped at 61.6 metres in mineralization (see Rio Tinto commences drilling at Forum's Janice Lake Copper/Silver Project, Saskatchewan news release dated February 16, 2021). JANL0026 confirmed the down-dip extension of the mineralization to the northwest.

Holes JANL0028 and 29 are located on a cross-section another 200m northeast of JANL0026 and 27 (Figure 2). These holes are 100m apart and continue to show mineralization having a shallow dip to the northwest. JANL0028 intersected 14 metres of oxide mineralization consisting of chrysocolla and malachite within an interpreted

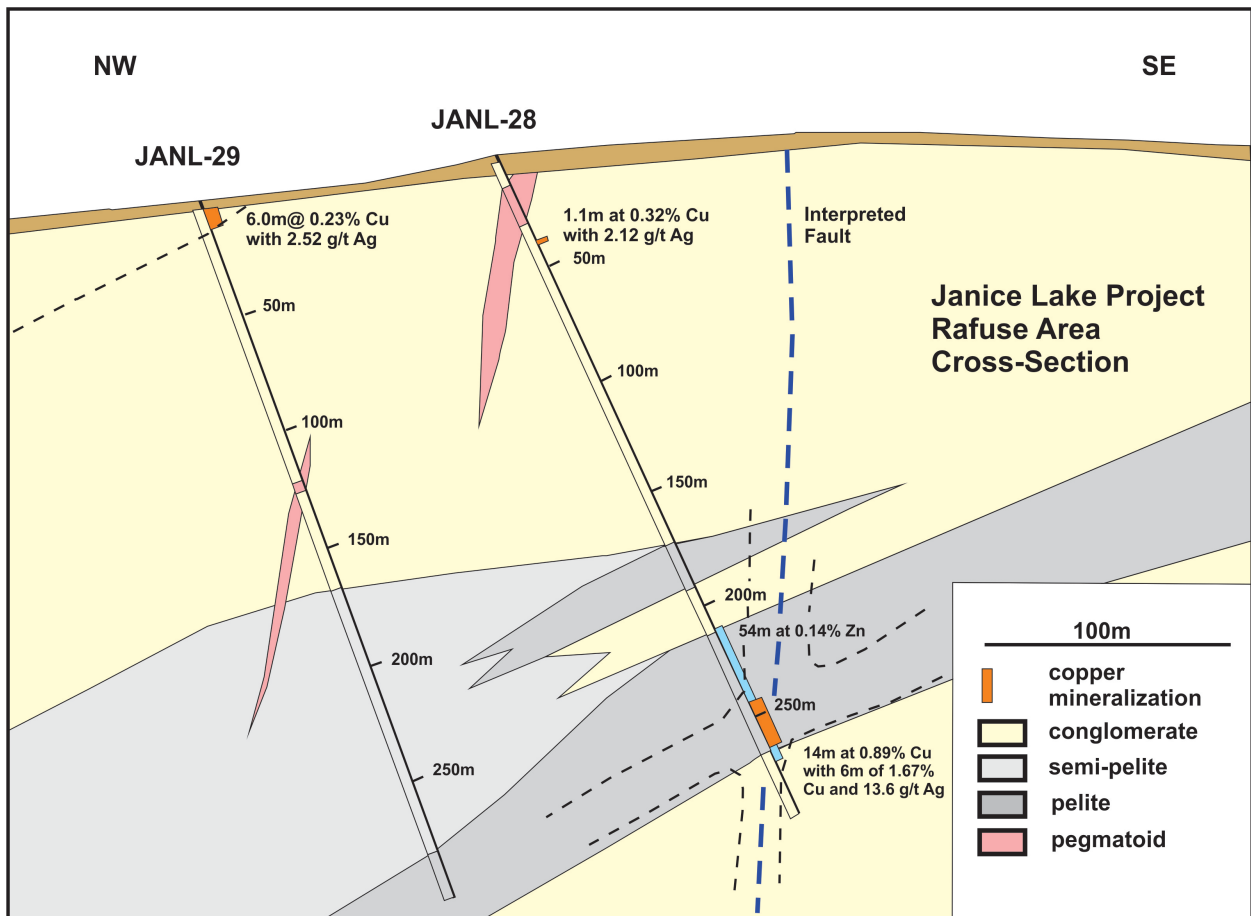
fault zone. It appears that hole JANL0029 intersected only the surface expression of the mineralization and it should continue to dip to the northwest.

Hole JANL0030 is located 270 metres southwest of the JANL0022 to JANL0026 cross section previously reported in a news release (Rio Tinto intersects 1.78% copper and 9.25 g/t silver over 3.1 metres within 48 metre copper zone at Forum's Janice Lake Copper/Silver Project, Saskatchewan dated May 25, 2021). The mineralized interval shows mineral zoning beginning in chalcocite and gradationally transitions downhole into zones with more dominant bornite and then chalcopyrite over 39 metres.

The Rafuse target is one of four targets drilled to date by RTEC, a 2.8 kilometre long priority target of surface copper mineralization. Figure 3 is a table of the results from all nine holes drilled to date on the Rafuse target. Final drilling plans for this summer are being developed by Rio Tinto and will be reported when available.



**Figure 1: Plan Map of the Rafuse Target.** Background is from the airborne magnetic survey, with red colours indicating magnetic highs.



**Figure 2: Cross Section JANL-28 and 29 with interpreted geology.**

2021 JANICE LAKE PROJECT DRILL RESULTS									
RAFUSE TARGET									
Hole Number	Depth of Hole	Easting	Northing	Dip/Azimuth	From (m)	To (m)	Thickness	Copper	Silver g/t
JANL0022	221	502173	6306311	-70 / 305					
JANL0023	264	502334	6306210	-75 / 130	19.0	67.0	48.0	0.32%	2.04
				including	33.0	36.15	3.15	1.78%	9.25
JANL0024	306	502239	6306273	-70 / 125	71.5	148.0	76.5	0.28%	2.00
					188.0	206.0	18.0	0.20%	1.58
JANL0025	171	502411	6306146	-70 / 130	21.0	29.0	8.0	0.16%	1.74
JANL0026	234	502443	6306392	-65 / 135	39.7	52.0	12.3	0.25%	2.05
					68.0	77.0	9.0	0.10%	0.77
JANL0027	258	502580	6306281	-65 / 315	208.0	210.0	2.0	0.25%	2.85
					224.0	226.3	2.3	0.17%	1.74
JANL0028	294	502553	6306540	-72 / 122	40.1	41.2	1.1	0.33%	2.12
					246.1	260.1	14.0	0.89%	8.02
				including	254.1	260.1	6.0	1.67%	13.6
JANL0029	300	502441	6306613	-65 / 125	3.0	9.0	6.0	0.23%	2.52
JANL0030	282	501987	6306125	-60 / 130	172.0	211.0	39.0	0.27%	3.08

**Figure 3: Assay Results from the 2021 Drill Program**

### **Quality Control/ Quality Assurance**

Core samples were sawed in half, keeping the half with the reference line for orientated core in the box. Samples averaged 2 metres in length through the mineralized zone, 4 metres in length in the unmineralized zone, however these lengths varied depending on stratigraphy, alteration or mineralization. Standards were introduced after every 20<sup>th</sup> sample, using a high grade, low grade or unmineralized, depending on the surrounding core. Duplicates were also introduced on every 20<sup>th</sup> sample, quartering the core. Blanks were used for the first sample of the hole and at the beginning and end of a mineralized interval, using certified rose quartz. A 4-acid digestion was used on the samples at ALS lab in Vancouver, followed by analysis by ICP-MS (the ME-MS61L package).

Ken Wheatley, P.Geo., Forum's VP, Exploration and Qualified Person under National Instrument 43-101, has reviewed and approved the contents of this news release.

### **Conference Call Information**

Rick Mazur, President & CEO and Ken Wheatley, VP, Exploration will discuss the significance of these drill results on the Rafuse target and Rio Tinto's plans for exploration and drilling this summer.

A question and answer period will follow.

Topic: Forum Energy Metals (FMC:TSXV) (FDCFF:US) Janice Lake exploration results update  
Time: Jun 9, 2021 01:00 PM Vancouver

Join Zoom Meeting

<https://us02web.zoom.us/j/87536197454?pwd=dkRXbkIybXppN0hMVm8zRXMyUWQ5QT09>

Meeting ID: 875 3619 7454  
Passcode: 154594  
One tap mobile  
+16699006833,,87536197454#,,, \*154594# US (San Jose)  
+19294362866,,87536197454#,,, \*154594# US (New York)

Dial by your location  
+1 669 900 6833 US (San Jose)  
+1 929 436 2866 US (New York)  
+1 312 626 6799 US (Chicago)  
+1 346 248 7799 US (Houston)

Meeting ID: 875 3619 7454  
Passcode: 154594  
Find your local number: <https://us02web.zoom.us/j/87536197454?pwd=MTU0NDY3MkUyL2F0b0ZlR0pXaDZkdz09>

## **About Forum Energy Metals**

Forum Energy Metals Corp. (**TSX.V: FMC**) has three 100% owned energy metal projects being drilled in 2021 by the Company and its major mining company partners Rio Tinto and Orano for copper/silver, uranium and nickel/platinum/palladium in Saskatchewan, Canada's Number One Rated mining province for exploration and development. In addition, Forum has a portfolio of seven drill ready uranium projects and a strategic land position in the Idaho Cobalt Belt. For further information: [www.forumenergymetals.com](http://www.forumenergymetals.com)

ON BEHALF OF THE BOARD OF DIRECTORS

Richard J. Mazur, P.Geol.  
President & CEO

*Neither the TSX Venture Exchange nor its Regulation Services Provider (as that term is defined in the policies of the TSX Venture Exchange) accepts responsibility for the adequacy or accuracy of this release.*

**For further information contact:**

### **NORTH AMERICA**

**Rick Mazur, P.Geol., President & CEO**  
[mazur@forumenergymetals.com](mailto:mazur@forumenergymetals.com)  
**Tel: 778-772-3100**

### **UNITED KINGDOM**

**Burns Singh Tennent-Bhoji, Director**  
[burnsstb@forumenergymetals.com](mailto:burnsstb@forumenergymetals.com)  
**Tel: 074-0316-3185**